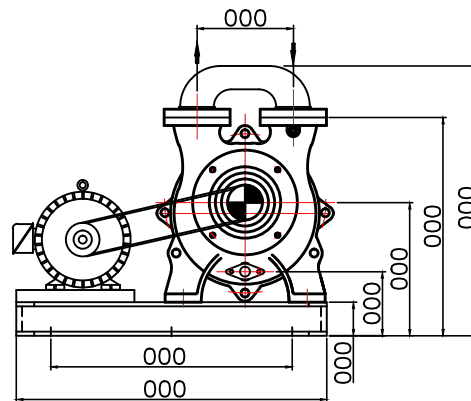
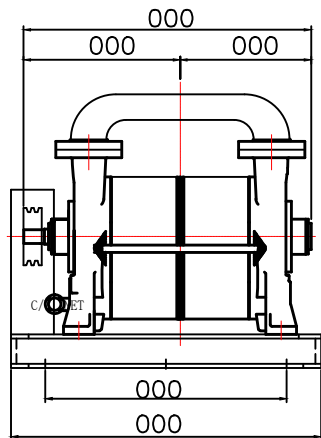
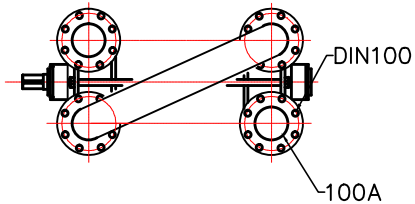


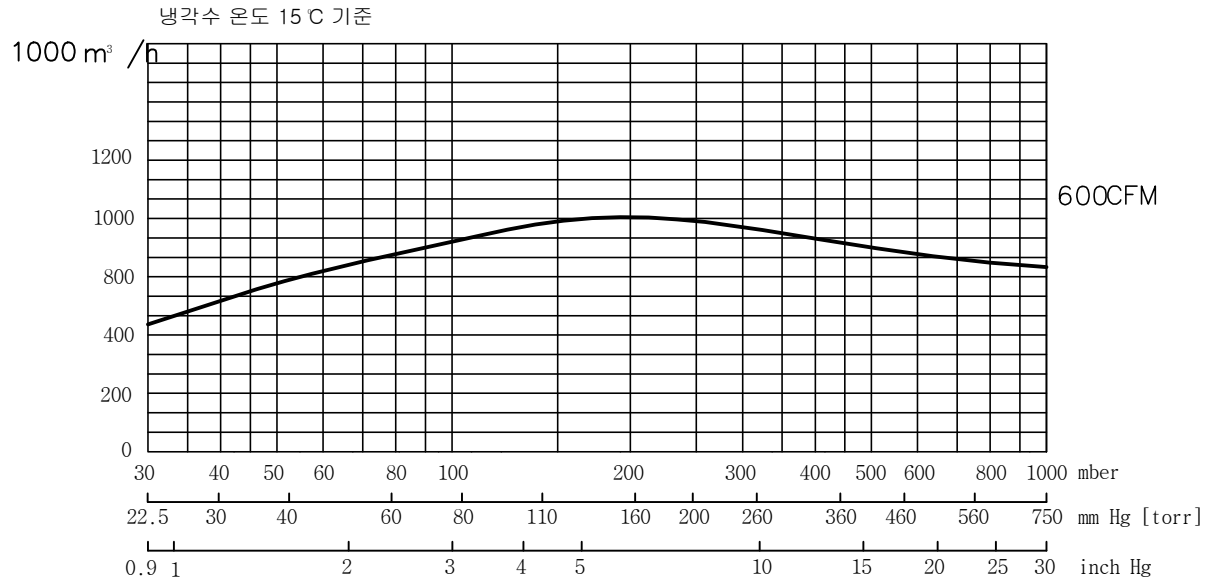
SPECIFICATIONS

Design	13600 Lit./min(50Hz)
Displacement	17000 Lit./min(60Hz)
Speed	980 r.p.m. (50Hz)
	1175 r.p.m. (60Hz)
Normal usage vacuum pressure	Under Torr
Attainable vacuum pressure	Max 17torr
Suction port diameter	DIN100A (2) (Option:B.S.P.T)
Motor	Horizontal Motor Standard 3-Phase 220/380V 60Hz 37kW 6P
Water Capacity	15°C 기준 110L/MIN
Weight	530 Kg
Painting	Color- VL951 (Company's standard)
Allowable ambient temp.	-10 - 40C

-1 Excluding motor and some other parts.



Curve referred to dry air at 20° C (68° F) SUCTION CAPACITY



ACCESSORIES(Option)

- Vacuum Manual Valve
- Vacuum gauge
- Vacuum Check Valve
- Separator Tank

CONSUMABLE LIST

(Vacuum.ENG GENUINE PARTS)

Designation	Specification	Quantity/set
M/C Seal	∅ 75	2
Bearing	5314,NU314 (Special Heat - resisting grease)	2
V-PULLY	∅	1
Shaft Key	∅60 80 X 9	1

- 품질 개선을 위해서 예고없이 변경 될수 있음.
- Not binding dimension that can change according to motor make

DWG DATE	SCALE	N/S	TITLE	WATER RING V/P
2006.04.15				CLIENT
DWGBY	DESBNBY	CHDBY	APPROVE	LOCATION
				DWG NO
				JHRP2-170